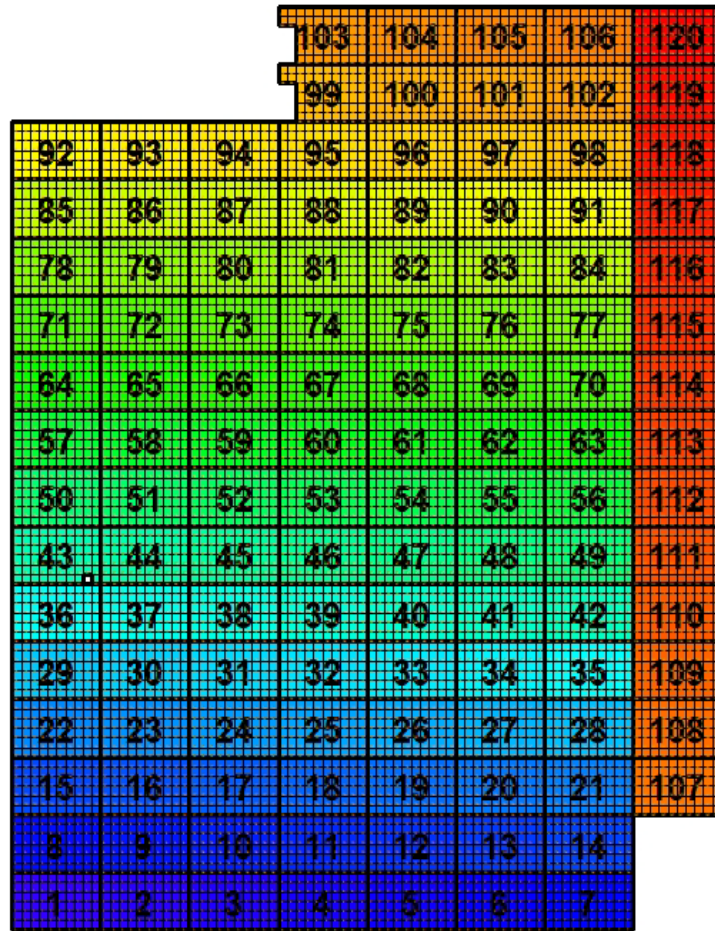


Gr:1-f1517-Ploc:1

N \wedge 10m
— Ruta
Ruta **96**

1 2 3 4 5 6 7 8 9 10 11 12 13 14 15 16 17 18 19 20 21 22 23 24 25 26 27 28 29 30 31 32 33 34 35 36 37 38 39 40 41 42 43 44 45 46 47 48 49 50 51 52 53 54 55 56 57 58 59 60 61 62 63 64 65 66 67 68 69 70 71 72 73 74 75 76 77 78 79 80 81 82 83 84 85 86 87 88 89 90 91 92 93 94 95 96 97 98 99 100 101 102 103 104 105 106 107 108 109 110 111 112 113 114 115 116 117 118 119 120

Ppos
1



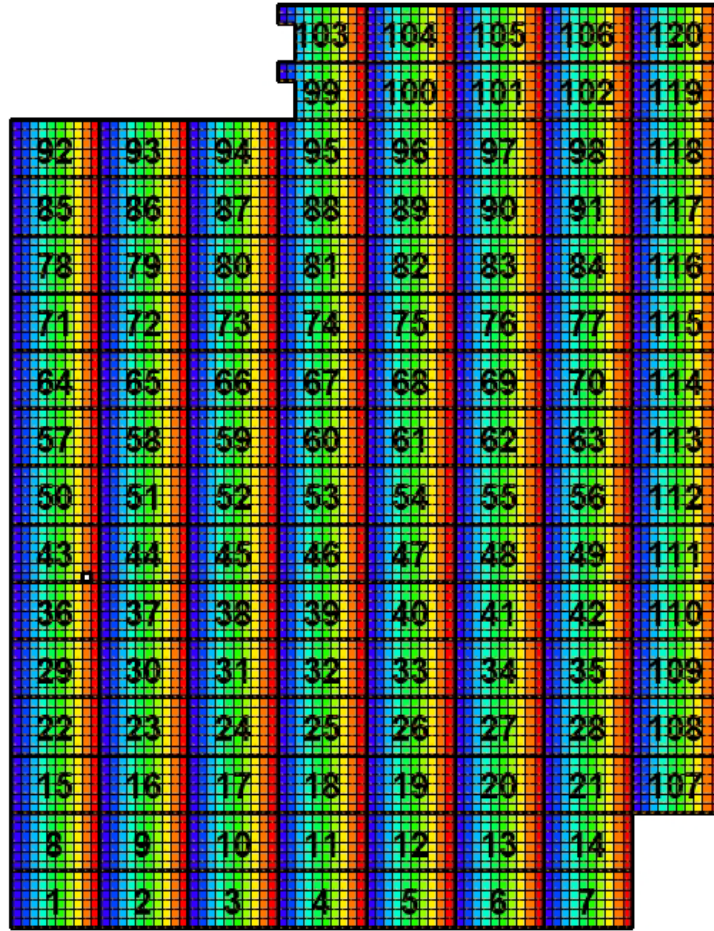
1 Missing 0
80 Rejected 0
Prow n 7183 of 7183
Ruta

Gr:1-f1517-Ploc:1

N Λ — 10m
 — Ruta
 Ruta

1
2
3
4
5
6
7
8
9
10

96
Ppos
1



1
Missing 0

Prow
n 7183 of 7183

80
Rejected 0

Rad

UseStem All

Points Labels are /Ruta

Data File:DMS_import_1517_Åryd.xlsx Mon Jan 23 12:55:24 2023 ControlFile:C:/temp/Treeplan - Documents/Pinus_sylvestris/f1517_Åryd

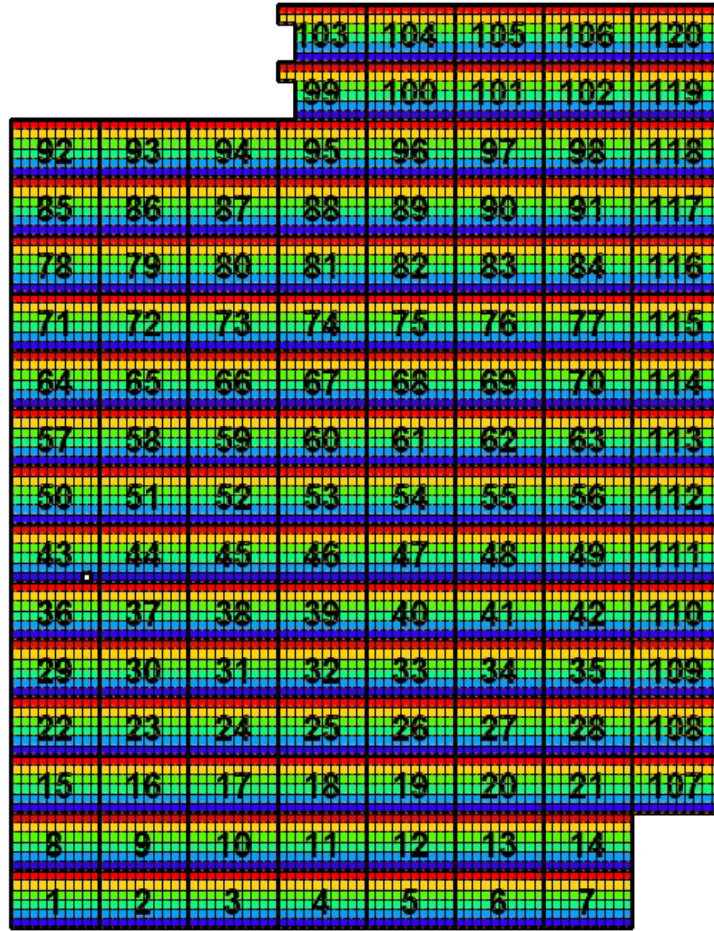
Gr:1-f1517-Ploc:1

N \wedge 10m
 — Ruta
 Ruta

6
5
4
3
2
1

96

Ppos
1



1
Missing 0

Prow
n 7183 of 7183

80
Rejected 0

Planta

UseStem All
 Points Labels are /Ruta

Data File:DMS_import_1517_Åryd.xlsx Mon Jan 23 12:55:25 2023 ControlFile:C:/temp/Treeplan - Documents/Pinus_sylvestris/f1517_Åryd

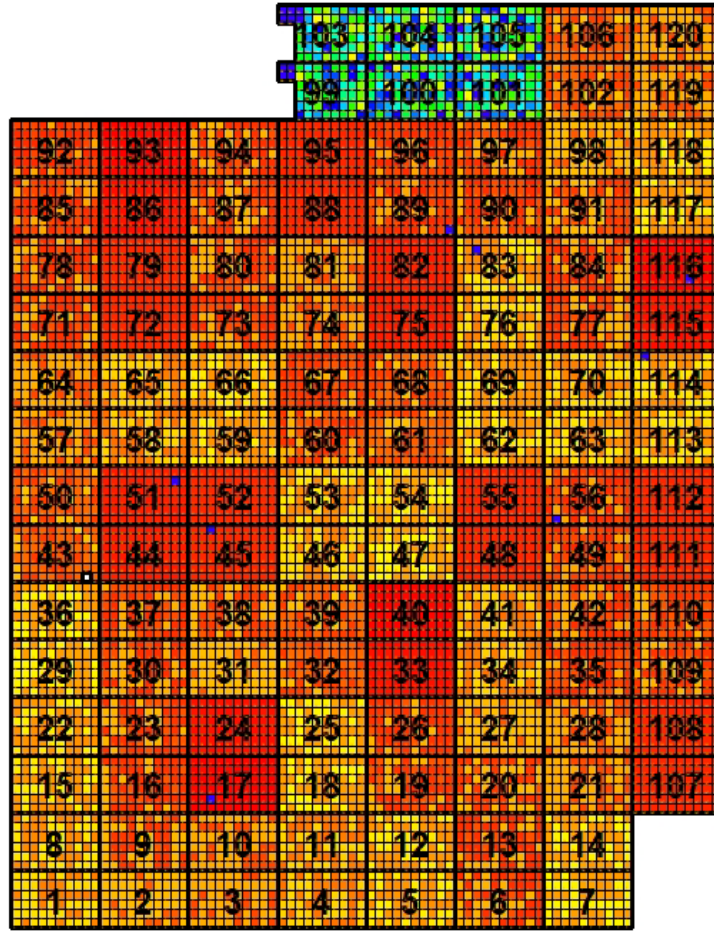
Gr:1-f1517-Ploc:1

N \wedge 10m
 — Ruta
 Ruta

96

Ppos

1



1
 Missing 0

Prow
 n 7183 of 7183

80
 Rejected 0

Sortnr

UseStem All

Points Labels are /Ruta

Data File:DMS_import_1517_Åryd.xlsx Mon Jan 23 12:55:26 2023 ControlFile:C:/temp/Treeplan - Documents/Pinus_sylvestris/f1517_Åryd

Gr:1-f1517-Ploc:1

N \wedge 10m

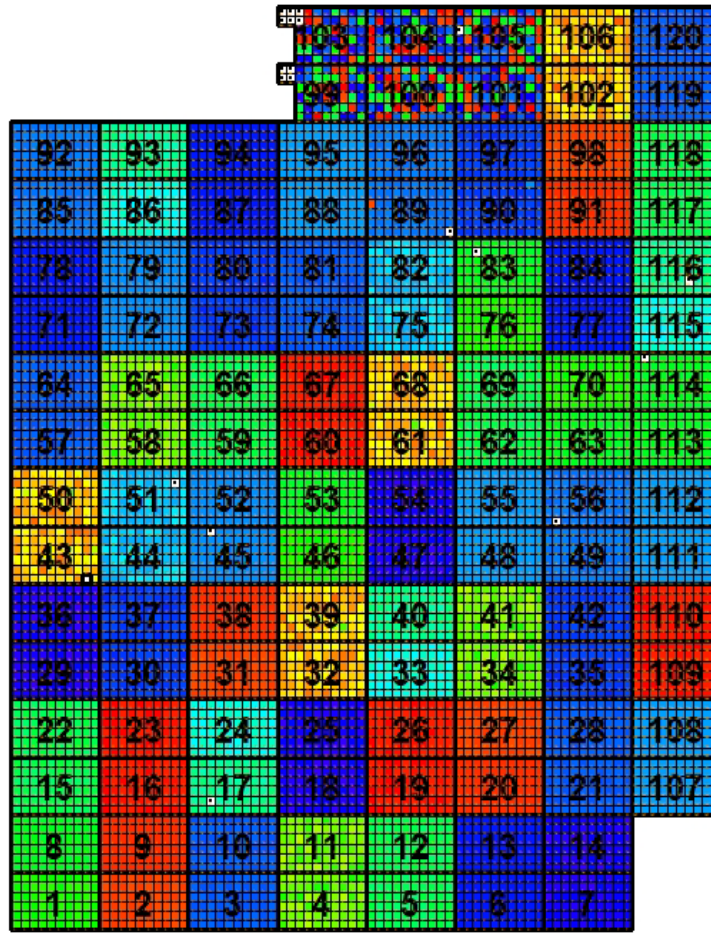
— Ruta

Ruta

96

Ppos

1



- 9.Gotthards berg=S23P1810474
- 9.Gotthards berg=S23P1710475
- 9.Gotthards berg=S21P0710850
- 8.Drögnäs=S23P1810473
- 7.Finsk plantage=S23P1410472
- 7.Finsk plantage=S23P1410471
- 6.Helsyskon, södra Sveige=S21H9710008
- 6.Helsyskon, södra Sveige=S21H9110019
- 6.Helsyskon, södra Sveige=S21H1811188
- 6.Helsyskon, södra Sveige=S21H1811182
- 6.Helsyskon, södra Sveige=S21H1811181
- 6.Helsyskon, södra Sveige=S21H1811158
- 6.Helsyskon, södra Sveige=S21H1811154
- 6.Helsyskon, södra Sveige=S21H1811112
- 6.Helsyskon, södra Sveige=S21H1811103
- 6.Helsyskon, södra Sveige=S21H1711072
- 6.Helsyskon, södra Sveige=S21H1711071
- 6.Helsyskon, södra Sveige=S21H1711068
- 6.Helsyskon, södra Sveige=S21H1711065
- 6.Helsyskon, södra Sveige=S21H0810684
- 6.Helsyskon, södra Sveige=S21H0410042
- 6.Helsyskon, södra Sveige=S21H0310031
- 5.Helsyskon, Mellans sveige=S22H1710087
- 5.Helsyskon, Mellans sveige=S22H1810020
- 5.Helsyskon, Mellans sveige=S22H1810012
- 5.Helsyskon, Mellans sveige=S22H1810094
- 5.Helsyskon, Mellans sveige=S22H1410058
- 5.Helsyskon, Mellans sveige=S22H1410052
- 5.Helsyskon, Mellans sveige=S22H1410056
- 5.Helsyskon, Mellans sveige=S22H1310484
- 5.Helsyskon, Mellans sveige=S22H1310482
- Bestånd, Norrland=S23A1810028
- Bestånd, Norrland=S23A1810026
- Bestånd, Norrland=S23A1810025
- Bestånd, Ryssk=S23A1810023
- Bestånd, Ryssk=S23A1810021
- Bestånd, Ryssk=S23A1810021
- Bestånd, Norrland=S23A1810013
- Bestånd, Norrland=S23A1810012
- Bestånd, Norrland=S23A1810011
- Bestånd, vealand=S23A1810026
- Bestånd, vealand=S23A1810016
- Bestånd, vealand=S21A1810108
- Bestånd, vealand=S21A1810107
- 1000 Douglas Kust=S21X1960228
- 1000 Douglas Kust=S21X1960218
- 1000 Douglas Kust=S21X1960218
- 1000 Douglas Kust=S21X1960218
- 1000 Douglas Kust=S21X1960153
- 7 Douglas Inland=S21X1960234
- 7 Douglas Inland=S21X1960214
- 7 Douglas Inland=S21X1960208
- 7 Douglas Inland=S21X1960189
- 7 Douglas Inland=S21X1960151
- 1000 Jork=S21X1960289
- 1000 Jork=S21X1960289
- 1000 Jork=S21X1960289
- 1000 Jork=S21X1960282
- 1000 Jork=S21X1960282
- 1000 Jork=S21X1960276
- 15.Gran, Söregårde=S21P2020016
- 14.Gran, Ekebö Elit=S21A0720005
- 13.Tysk plantage=S21P2010025
- 13.Tysk plantage=S21P2010023
- 12.Polsk plantage=S21P2010021
- 12.Polsk plantage=S21P2010020
- 11.Treö Bredinge=S21P1810029
- 11.Treö Bredinge=S21P1810015
- 10.Treö Albjershus=S21P1910018
- 1.Bestånd, Götaland=S21A1810105
- 1.Bestånd, Götaland=S21A1810104
- 1.Bestånd, Götaland=S21A1810103
- 1.Bestånd, Götaland=S21A1810102
- 1.Bestånd, Götaland=S21A1810101

1 Missing 19 Prow n 7164 of 7183 Rejected 0

Prov

UseStem All

Points Labels are /Ruta

Data File:DMS_import_1517_Aryd.xlsx Mon Jan 23 12:55:29 2023 ControlFile:C:/temp/Treeplan - Documents/Pinus_sylvestris/f1517_Aryd

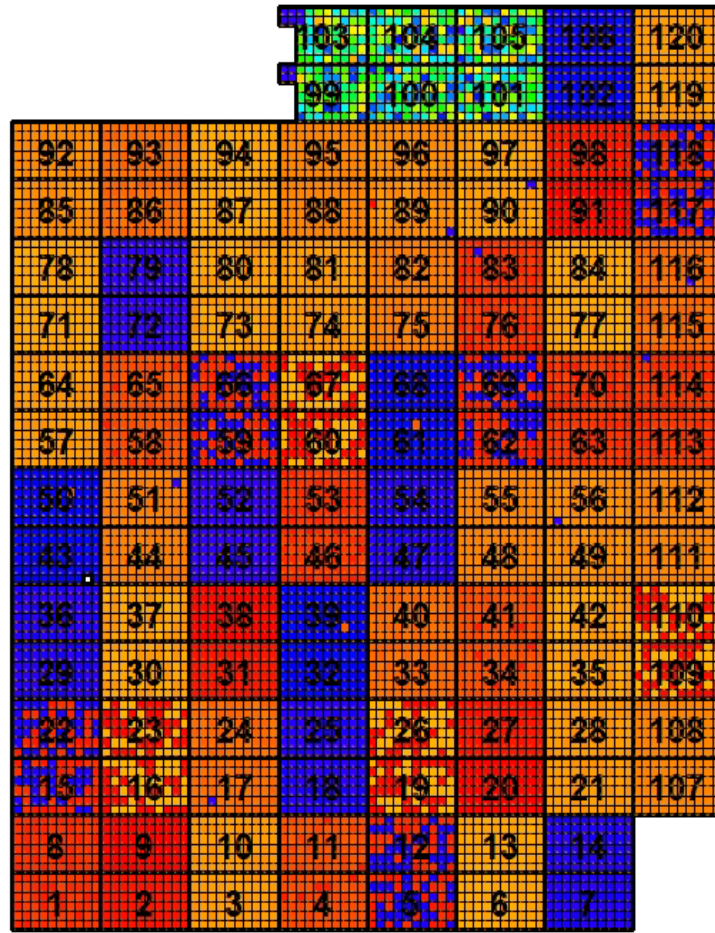
Gr:1-f1517-Ploc:1

N Λ — 10m
 — Ruta
 Ruta

96

Ppos

1



1 Missing 0 n 7183 of 7183 Prow Rejected 0
 80

Family_name

UseStem All
 Points Labels are /Ruta

Data File:DMS_import_1517_Åryd.xlsx Mon Jan 23 12:55:27 2023 ControlFile:C:/temp/Treeplan - Documents/Pinus_sylvestris/f1517_Åryd

Gr:1-f1517-Ploc:1

N Λ — 10m
 — Ruta
 Ruta

96

Tall

Gran

Douglasgran

Björk

Ppos

1



1
Missing 19

Prow
n 7164 of 7183

80
Rejected 0

Trsl

UseStem All
 Points Labels are /Ruta

Data File:DMS_import_1517_Åryd.xlsx Mon Jan 23 12:55:28 2023 ControlFile:C:/temp/Treeplan - Documents/Pinus_sylvestris/f1517_Åryd